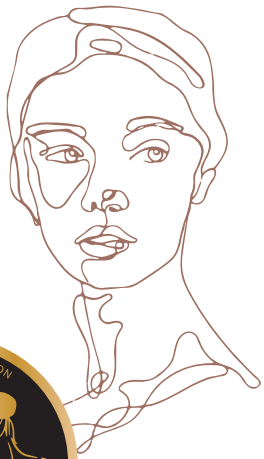


PLANNING CURSUS RNCP FACIALISTE 2023/2024 - LILLE



**CENTRE DE FORMATION
A FLEUR DE PEAU**

Lieux des cours : Les Yogis – 61 rue Léon
Gambetta – 59000 LILLE
Horaires : 9h-17h

E-learning

Anatomie/Biologie
Technique de soins
Cosmétologie
Vente

Prévoir 70 heures de stage

| Septembre | | Octobre | | Novembre | | Décembre | | Janvier | | Février | | |
|-----------|--|---------|------------------------------|----------|--------------|----------|------|------------------------------|---------------------------|---------|--|--|
| 1 V | | 1 D | Massage du visage Japonais 1 | 1 M | | 1 V | | 1 L | | 1 J | | |
| 2 S | | 2 L | | | 2 J | | 2 S | | 2 M | | 2 V | |
| 3 D | | 3 M | | | 3 V | | 3 D | Massage du visage Japonais 2 | 3 M | | 3 S | |
| 4 L | | 4 M | | 4 S | | 4 L | | | 4 J | | 4 D | Tech. Kobido & Gym du visage & Dien Cham |
| 5 M | | 5 J | | 5 D | | 5 M | | 5 V | | 5 L | | |
| 6 M | | 6 V | | 6 L | | 6 M | | 6 S | | 6 M | | |
| 7 J | | 7 S | | 7 M | | 7 J | | 7 D | Massage Intra Buccal | 7 M | | |
| 8 V | | 8 D | | 8 M | | 8 V | | 8 L | | | 8 J | |
| 9 S | | 9 L | | 9 J | | 9 S | | 9 M | | 9 V | | |
| 10 D | | 10 M | | 10 V | | 10 D | | 10 M | | 10 S | Révisions Excellence du toucher en massage | |
| 11 L | | 11 M | | 11 S | | 11 L | | 11 J | | 11 D | | |
| 12 M | | 12 J | | 12 D | | 12 M | | 12 V | | 12 L | | |
| 13 M | | 13 V | | 13 L | | 13 M | | 13 S | | 13 M | | |
| 14 J | | 14 S | | 14 M | | 14 J | | 14 D | | 14 M | | |
| 15 V | | 15 D | Drainage visage | 15 M | | 15 V | | 15 L | | 15 J | | |
| 16 S | | 16 L | | | 16 J | | 16 S | | 16 M | | 16 V | |
| 17 D | | 17 M | | 17 V | | 17 D | | 17 M | | 17 S | | |
| 18 L | | 18 M | | 18 S | | 18 L | | 18 J | | 18 D | | |
| 19 M | | 19 J | | 19 D | | 19 M | | 19 V | | 19 L | | |
| 20 M | | 20 V | | 20 L | | 20 M | | 20 S | | 20 M | | |
| 21 J | | 21 S | | 21 M | | 21 J | | 21 D | Guasha & Tui Na Ventouses | 21 M | | |
| 22 V | | 22 D | | 22 M | | 22 V | | 22 L | | | 22 J | |
| 23 S | | 23 L | | 23 J | | 23 S | | 23 M | | 23 V | | |
| 24 D | | 24 M | | 24 V | | 24 D | | 24 M | | 24 S | | |
| 25 L | | 25 M | | 25 S | | 25 L | | 25 J | | 25 D | | |
| 26 M | | 26 J | | 26 D | | 26 M | | 26 V | | 26 L | | |
| 27 M | | 27 V | | 27 L | Hinoki soins | 27 M | | 27 S | | 27 M | | |
| 28 J | | 28 S | | 28 M | | | 28 J | | 28 D | | 28 M | |
| 29 V | | 29 D | | 29 M | | 29 V | | 29 L | | 29 J | | |
| 30 S | | 30 L | | 30 J | | 30 S | | 30 M | | | | |
| | | 31 M | | | | 31 D | | 31 M | | | | |



**Examen
11 et 12
avril**

CONTACT

04 78 84 24 91
contact@afleurdepeaulyon.com
269 Rue Duguesclin, 69003 Lyon

